



Pan/Tilt Network Camera PT7135

Quick Installation Guide

This guide describes the basic functions of PT7135. All detailed information is described in the user's manual.

6F., No. 192, Lien-Cheng Rd., Chung-Ho, Taipei County, Taiwan
Tel: +886-2-8245-5282 Fax: +886-2-8245-5532
E-mail: sales@vivotek.com <http://www.vivotek.com>



Warning Before Install

- Power off the Network Camera as soon as it is found smoking or smelt unusual.
- Keep the Network Camera away from the water. If the Network Camera is wet, power off immediately.

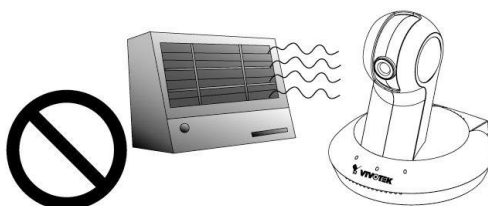
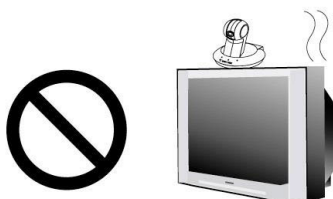


Contact your distributor when such cases happen.

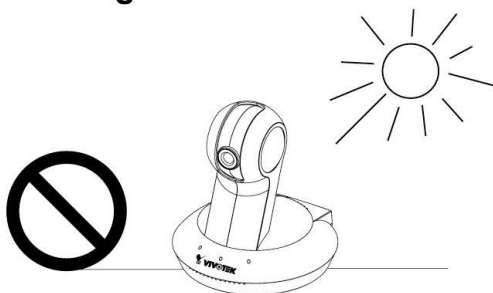


Contact your distributor when such cases happen.

- Do not place the Network Camera around the heat sources, such as television or oven.
- Refer to your user's manual for the operating temperature.



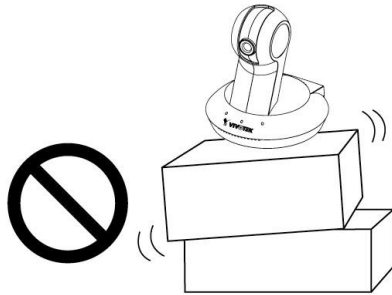
- Keep the Network Camera away from the direct sunlight.



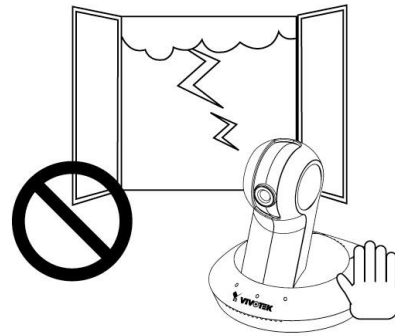
- Do not place the Network Camera in high humid environments.



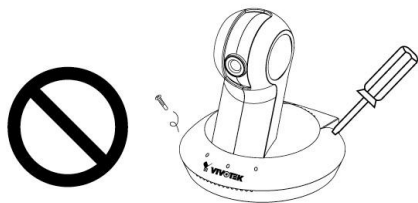
- Do not place the Network Camera on unsteady surfaces.



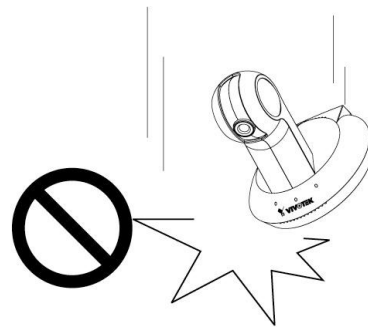
- Do not touch the Network Camera when it's lightening.



- Do not disassemble the Network Camera.



- Do not drop the Network Camera.



- Do not insert any object into the Network Camera, such as needles.

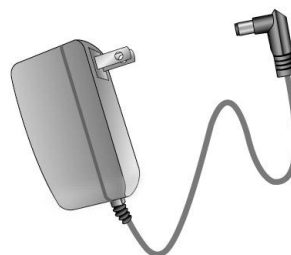


1 Check Package Contents

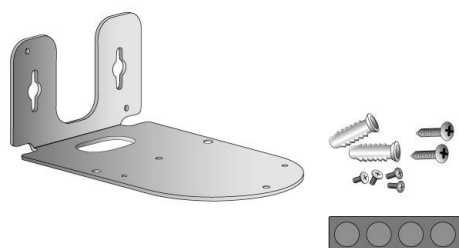
● PT7135



● Power Adapter



● Camera Mount Kit & Pads



● Software CD



● Quick Installation Guide

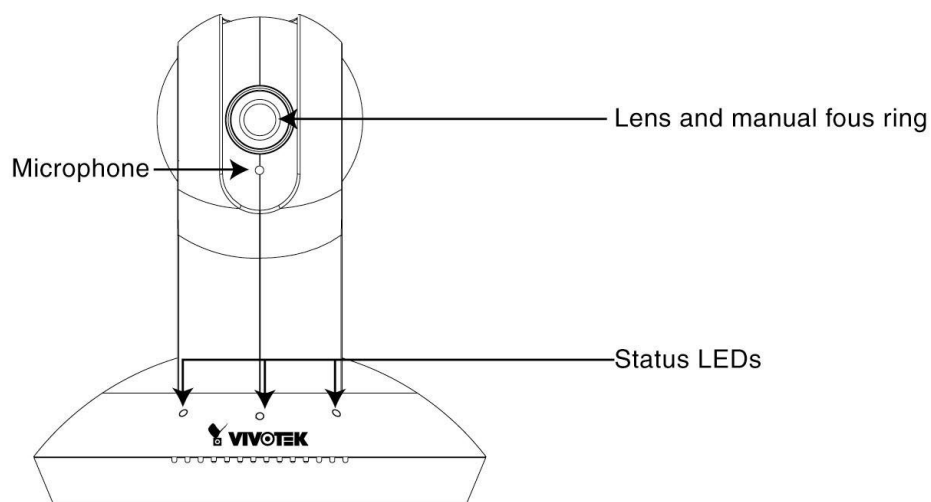


● Warranty Card

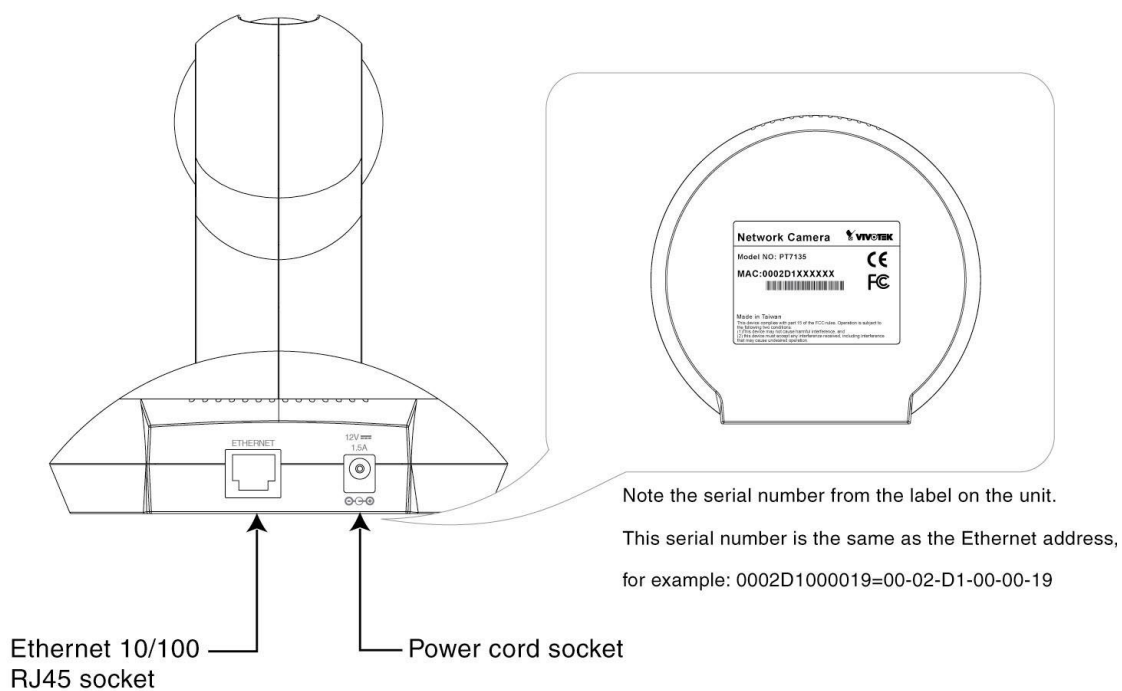


2 Physical Description

● Front



● Rear

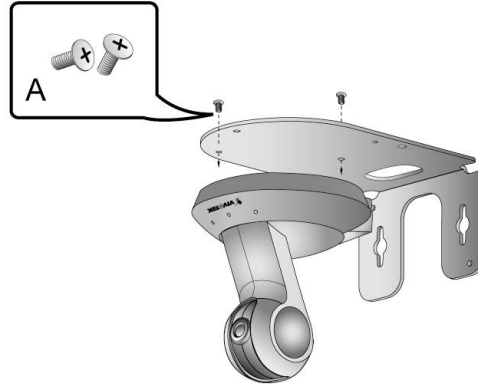


3

Mounting the Camera

● Ceiling Mount

1. Fix the camera to the bracket with the two supplied screws (typeA).

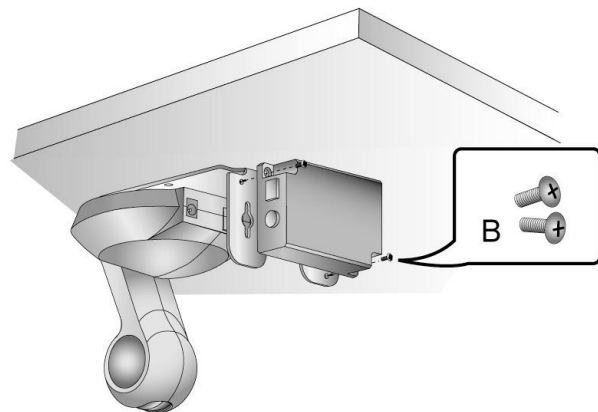


※ TypeA  TypeB 

2. Fix the bracket and camera to the ceiling using the two screws and hollow wall anchors.

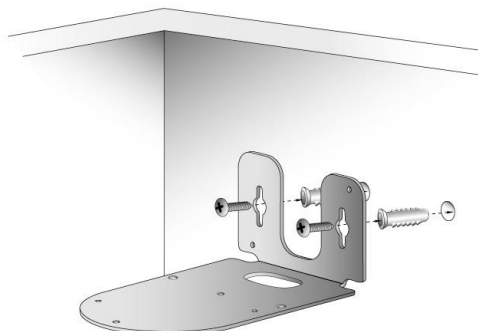


3. If adopting POE kit (optional accessory), the POE splitter can be attached to the bracket by using the two supplied screws (typeB).

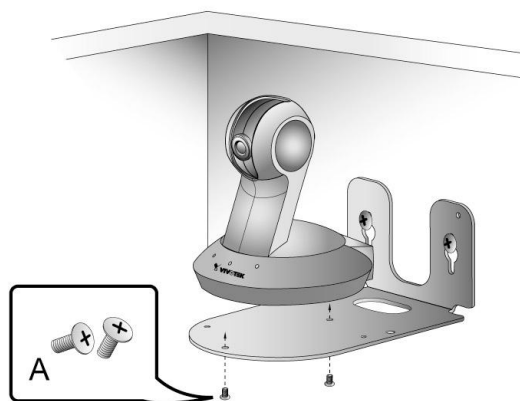


● Wall Mount

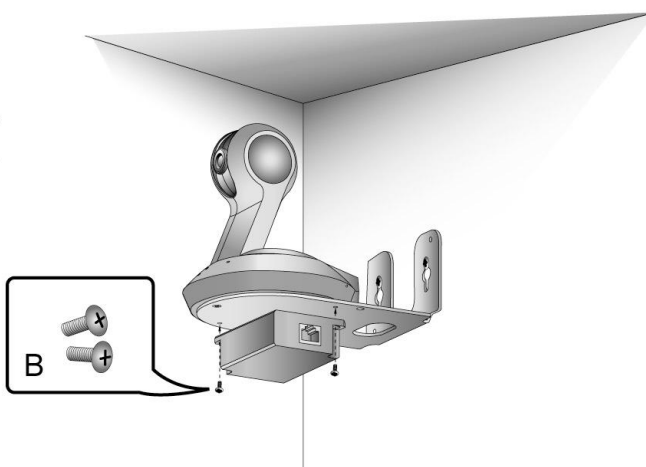
1. Fix the bracket to the wall using the two screws and hollow wall anchors.



2. Fix the camera to the bracket with the two supplied screws (typeA).

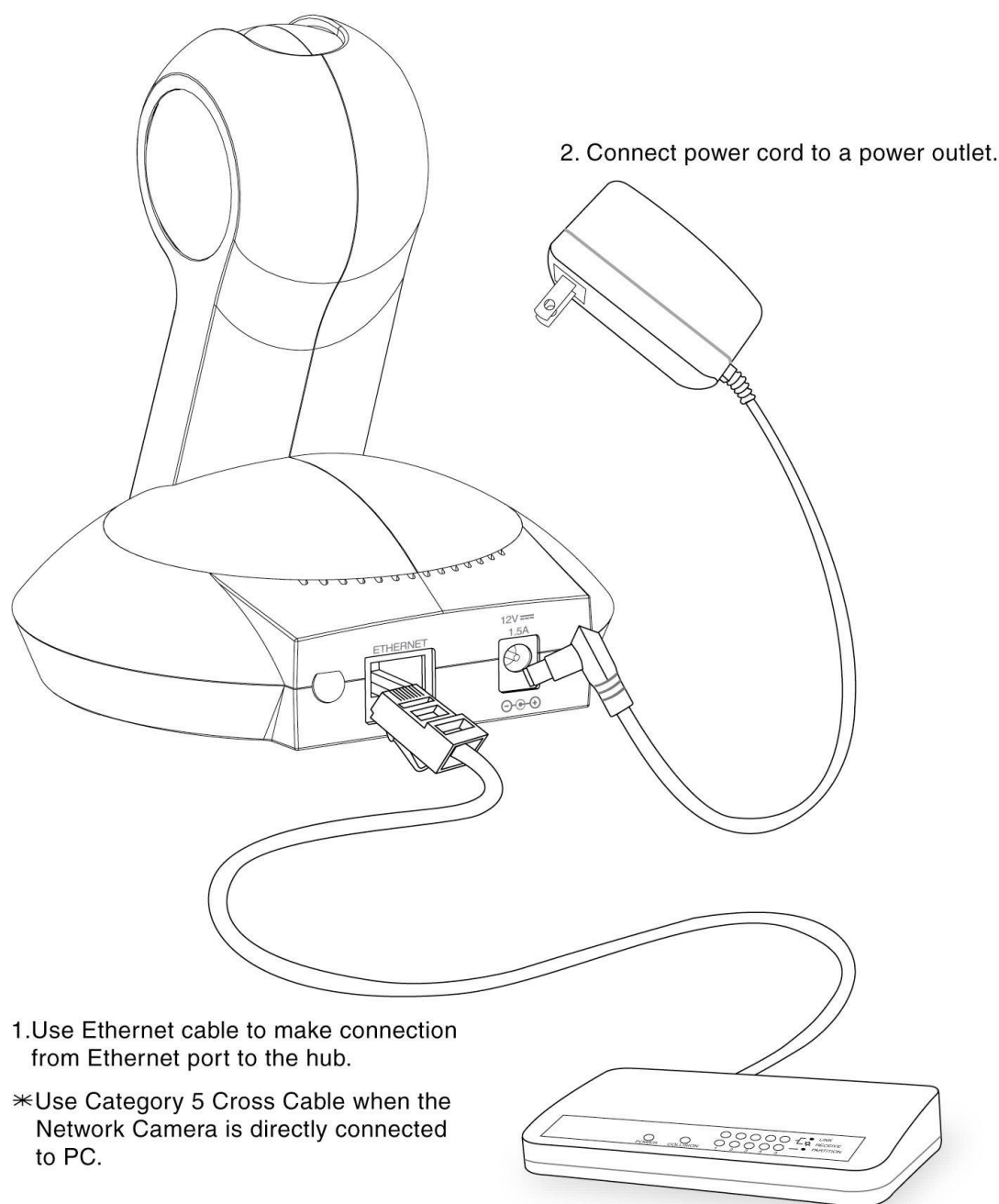


3. If adopting POE kit (optional accessory), the POE splitter can be attached to the bracket by using the two supplied screws (typeB).



4

Install Your Network Camera in Ethernet Network



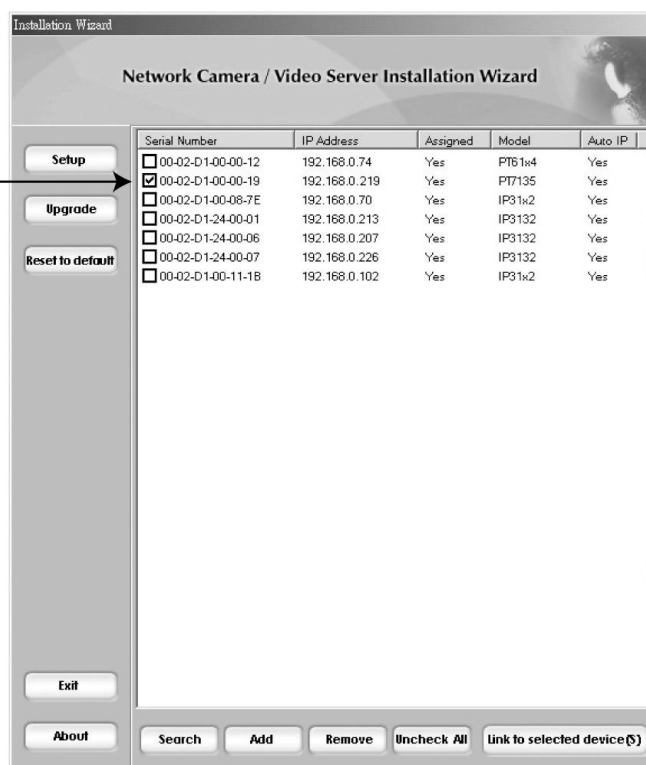
5 Assign IP Address

1.Run the "Installation Wizard" under the Software Utility directory from software CD.

2.The program will search the servers or cameras on the same LAN.



3.After searching, the main installer window will pop up. Click on serial number that matches the one you just noted from **2** Physical description

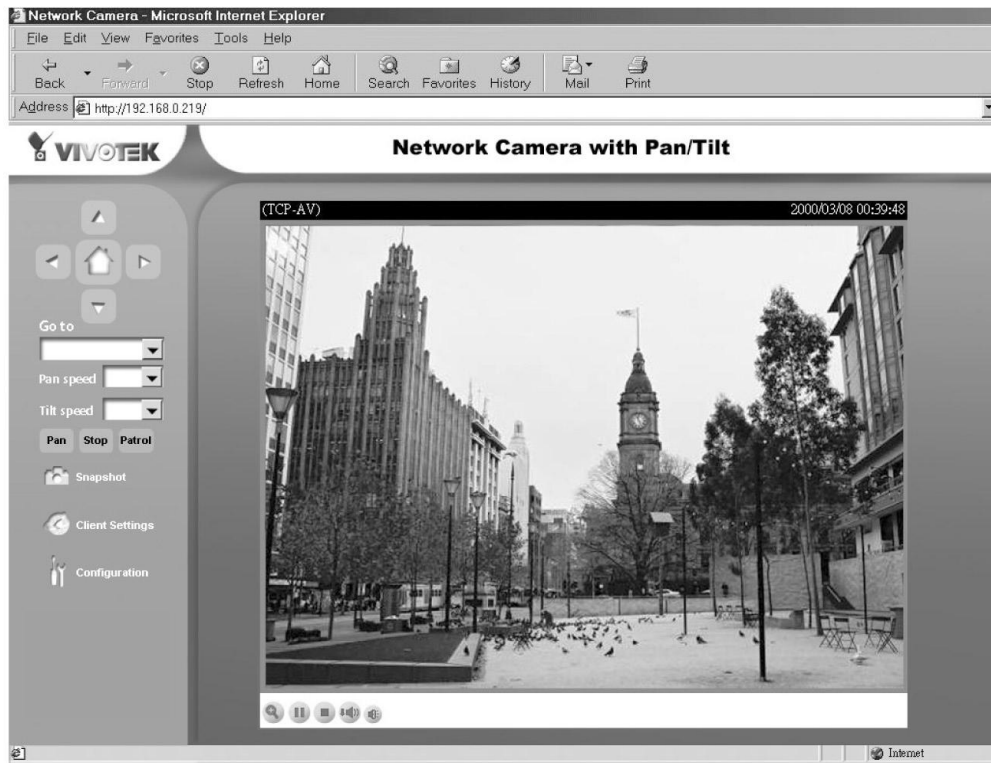


4.Click "Link to selected device(s)" to connect the Internet Explorer to the Network Camera.

※ If there is no DHCP server on the LAN, please refer to the user's manual for the methods of assigning an IP address.

6

The Internet Explorer Connects to the Network Camera



For setup further configuration, please check user's manual on the software CD.